

THIRTY YEARS IN OXFORD

Thirty years ago this fall, The Central Office first opened its doors for business at 330 South Campus Avenue in Oxford, Ohio. The fraternity remembers and salutes those who have made it all possible.

This fall marks the 79th Anniversary of Delta Sigma Pi's founding at New York University. Delta Sigma Pi has become one of the premiere professional collegiate fraternities in the world, enjoying a rich heritage. Its history includes many great moments and recognizes many great men and women in the commercial and academic world. Paralleling the history of the fraternity is the creation and development of its national headquarters, The Central Office. This fall marks the 30th Anniversary of the move of The Central Office from 222 West Adams Street in Chicago to 330 South Campus Avenue in Oxford, Ohio.

Since the doors of The Central Office were opened in Oxford on September 1, 1956, many men and women have dedicated part or all of their careers to the service of Delta Sigma Pi at The Central Office. For some, working at The Central Office has been just the start of a career that has taken them to other parts of the country. For these people,



The Central Office opened in September, 1956, and was dedicated in May, 1957. Here, the building is toured during the 22nd Grand Chapter Congress held in Cincinnati-Oxford, Ohio, in 1959.

working at The Central Office may have just been a one to two year stop in their lives filled with unforgettable memories about working for the fraternity. For others, Oxford has become a permanent home, even after leaving the employ of the fraternity at The Central Office. Still for others, working at The Central Office has served to provide the opportunity, over several years of employment, to develop a professional foundation which has continued elsewhere in the business world. In all cases, working for the national headquarters of Delta Sigma Pi has provided the past and present employees of The Central Office with many exciting, challenging, rewarding and sometimes, frustrating moments which cannot be experienced in any other line of work.

Elsewhere in this issue is an article introducing you to the individuals who currently work for the national fraternity at The Central Office. In addition to presenting them to you, some highlights of The Central Office and its 30 year history in Oxford are presented here.

Although the idea of Delta Sigma Pi having its own Central Office Building rather than leasing office space was in existence for many years, little was done about it until 1949 when then Grand President Allen L. Fowler persuaded the Grand Council to create a Central Office Building Reserve Fund for



A very severe winter in early 1956 hampered construction of The Central Office, pushing back the proposed completion date from May to September, 1956.

the eventual construction of such a building. This Fund grew slowly with small appropriations being made each year from the general operations of the fraternity.

In 1954, the thought of a Central Office Building sprung to life when the Grand Council was seeking some suitable way to recognize H. G. Wright, who had served as Executive Director and Administrator of The Central Office for some 30 years, and who anticipated retirement in 1955. The decision was made in the

summer of 1954 to proceed with the construction of a building after an investigation had proven that it was feasible and desirable. The next year was a busy one, with the creation of enabling legislation, the search for a suitable location, the campaign for funds and the development of construction plans.

Ground breaking ceremonies for the new Central Office took place in September, 1955. A very severe winter handicapped the builders for several months, pushing back the proposed completion date from May, 1956, to September 1, 1956. Finally, though, the cornerstone was laid on August 24, 1956, and ceremonies were conducted by Grand President J. Harry Feltham officiating and the date for occupancy of the new Central Office was set for September 1, 1956. A description of the move of The Central office from Chicago to Oxford was best recorded in the report of Executive Director James D. Thomson, presented at the 21st Grand Chapter Congress in 1957. Part of that report is reproduced here:

“In May of '56 when we were supposed to move in, giving us a whole summer to unpack our gear and practice a little for the benefit of the entirely new staff, the building was at the stage where it resembled a roofless barn with only the walls standing. It was then that our opti-



As the summer of 1956 came to an end, the construction of The Central Office progressed toward a September 1 occupancy date.

mism showed for a second time because we began to pack and boldly announced that come 'hell or high water' we intended to move to Oxford on September 1. I'm sure the contractor, architects and everyone else concerned was laughing at us for being so naive as to think that the building could possibly be ready for us on that date, but they humored us by not expressing their thoughts. Instead, extra crews of men were employed, and Saturday, Sunday and holiday schedules were adopted in order to make our wishful thinking a reality if at all possible. What a headache our optimism must have been to them? We may never know.

Came September 1, 1956, we turned the key in the door at 222 West Adams Street for the last time, after overloading a Mayflower van by 15,000 pounds, and gaily set out for Oxford. Our spirit was soon badly bent, for the building was not ready to receive us. Tarpaulins for doors, planks for stairs, extension cords for illumination and make-shift plumbing greeted us. I don't think I'll ever forget the look on the van driver's face when he pulled up in front and I assured him that he had the right place. 'Got to humor this crazy man,' he thought, 'he could be dangerous.' Four carpenters and a little ingenuity built the best ramp you ever saw, from the van to the first floor permitting all

of our desks and other equipment to be placed in the center of the three rooms slated for early completion. About 150 cartons of supplies were dumped on cement blocks in what is now our basement meeting room. All the while the unloading progressed, the painters, carpenters, electricians and plumbers continued to whittle away at the job around them stopping only long enough to dodge a desk or a file coming their way. You have no doubt seen or at least heard of the three ring circus, believe me this had it beat and the pounding lasted for several months, too.

One week after the movers departed the painters collected their buckets from three-fourths of the first floor which permitted us to descend with brooms, mops, rags and vacuums. It took one solid weekend to dent the dirt and dust that had accumulated on our equipment and to shift it around so that it could be put to use. We thought then that we had it licked and that we could begin to provide the service being demanded by the men returning to the campuses. Wham, the bubble burst again when our brand new staff was driven out of the building repeatedly by power failure, cold days and no heat. When I look back I sure admire the spunk of our new staff which moved desks, scrubbed equipment and turned out work under every conceivable hardship.



Laying the cornerstone of the "new" Central Office in Oxford in 1956 are Grand president J. Harry Feltham (left) and Past Grand President John L. McKewen.

By November we had thoroughly convinced everyone that we were as stubborn as Missouri mules and that we were determined to stay. Each day, too, made better Greeks out of the staff and they no longer ran for cover when we shouted mail those Form J's to Gamma Delta and tell Alpha Lambda the badges are coming from Burr, Patt. An occasional shout in the direction of the carpenters and painters had its effect, too, and by February they had retreated out the back door leaving a completed building in their wake. And, thus, The Central Office moved from Chicago to Oxford, a rugged experience which I don't believe I could face again, but one which had its humorous side and one which certainly produced a great deal of satisfaction.

Was it worth it, you be the judge. Picture if you will a fine substantial colonial building standing stately on an acre of ground with new lawns neatly manicured and young shrubs and trees straining to play their part in the overall picture. Across the street and up the block stretches the beautiful Georgian campus of Miami University. 'Ivy league' all the way. Better yet, a whole town of strictly college and The Central Office of Delta Sigma Pi is an integral part of it, taking its place alongside the national headquarters of Beta Theta Pi, Phi Delta Theta and Phi Kappa Tau."



Delta Sigma Pi national officers and business faculty from Miami University gathered outside the front stairway during the cornerstone ceremonies.



The Central Office building was dedicated to H. G. "Gig" Wright on May 18, 1957.

After the move was completed, The Central Office of Delta Sigma Pi at 330 South Campus Avenue in Oxford, Ohio, was finally dedicated to Brother H. G. "Gig" Wright on May 18, 1957.

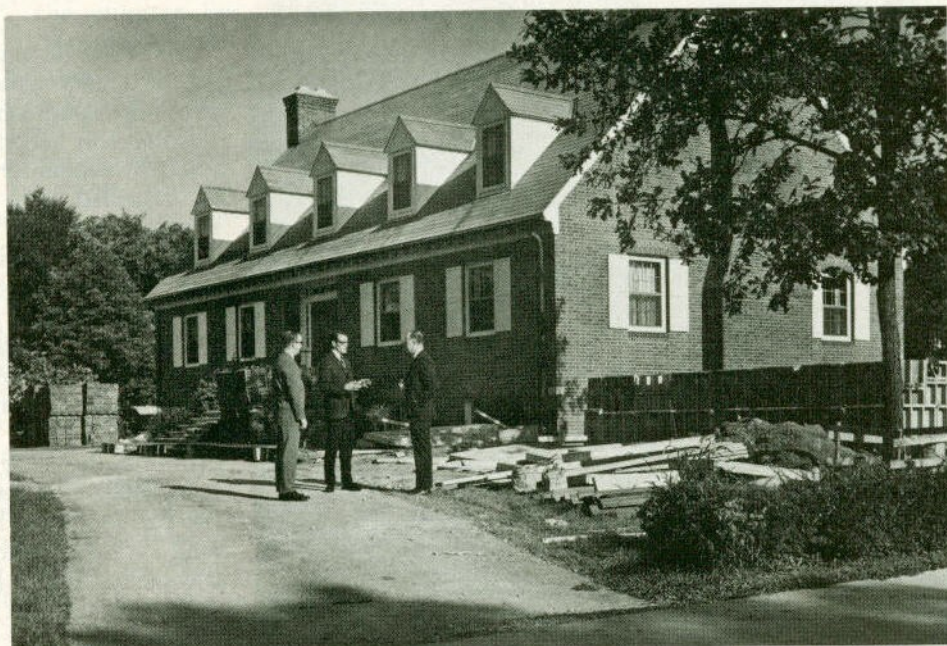
The move to Oxford necessitated the hiring of a complete new staff with the exception of Executive Director Jim Thomson and Executive Secretary Ray Flodin, both of whom moved to Oxford from Chicago. Through the years, members of the staff of The Central Office have changed just as has the fraternity. Since The Central Office was completed in 1956, Delta Sigma Pi has grown from 94 chapters to 215 chapters. In 1956, total membership of the fraternity was 37,000 as compared to a membership in excess of 127,000 today. To keep pace with this dramatic increase in the size of the fraternity over the past 30 years, many changes have been made to keep pace with the level of service that the membership has come to expect.

In 1959, the Field Secretary program was inaugurated at The Central Office. This program, which continues today as the Chapter Consultant program, allows The Central Office to visit almost every chapter

(See OXFORD on page 29)



James D. Thomson was the first Executive Director at the "new" Central Office when it opened in 1956.



Due to tremendous growth in the fraternity, two wings were added onto The Central Office building in 1970. Here, Executive Director Charles L. Farrar (left) and Executive Secretary Ben H. Wolfenberger (center) discuss the plans with Grand President M. John Marko.

Roberts was hired for that position and since then the fraternity has tried to provide a stronger emphasis in the area of chapter services.

Throughout the years, The Central Office has tried to maintain the latest in office machines and products. It utilizes the latest in word and data processing equipment and has done so since 1982 when the fraternity purchased its own computer system and in 1985 when it added a full line of word processing capability.

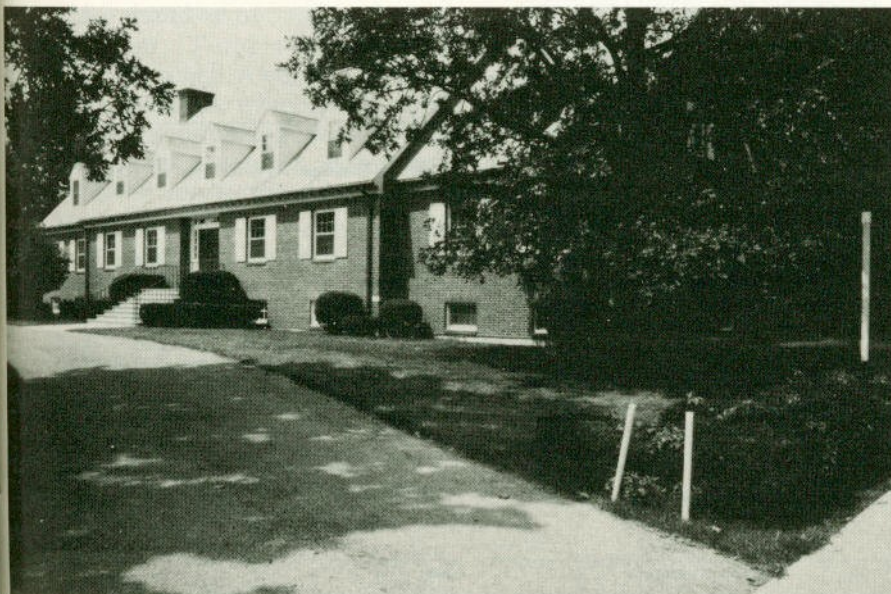
Since The Central Office was moved to Oxford 30 years ago, the fraternity has employed four Executive Directors, six Assistant Executive Directors, two Director of Chapter Services and 27 Chapter Consultants. In addition, several valuable clerical and maintenance personnel have worked for the fraternity.

The Central Office has come a long way since 1956 when it moved to Oxford, Ohio. The Central Office has grown to include 12 full-time and three part-time employees, has doubled in physical size and continues to be one of the most attractive national fraternity headquarters in the world. Delta Sigma Pi continues to remain a progressive and dynamic fraternity and its attributes have been reflected in its national headquarters, The Central Office, in Oxford for 30 years.

in the fraternity each year. Chapter Consultants are recent graduates, trained in all areas of chapter operations, who offer suggestions to chapters concerning their programming. The first Field Secretary or Chapter Consultant was Charles L. Farrar who was hired in 1959. Since 1959, 27 men have served anywhere from one to three years in the position of Chapter Consultant providing consultation services to collegiate and alumni chapters.

As Delta Sigma Pi continued to grow, a need for more space in The Central Office was evident. In 1970, two wings were added to The Central Office Building approximately doubling the size of the national headquarters. These additions provided office space for the Chapter Consultants, a separate membership records room, a separate financial records room and a mail room. It also provided for more storage space, a Board of Directors Room and an Archives Room.

In 1981, in an effort to provide even more service to collegiate and alumni chapters, the fraternity approved the creation of an additional staff position, the Director of Chapter Services. Mark A. Roberts was the first Director. Mark A.



The Central Office in Oxford, Ohio, as it appears today.

EXECUTIVE DIRECTOR 1956-86

1956-64	James D. Thomson	Beta-Northwestern (Chicago)
1964-74	Charles L. Farrar	Beta Psi-Louisiana Tech
1974-81	Ben H. Wolfenberger	Beta Upsilon-Texas Tech
1981-	Michael J. Mazur, Jr.	Kappa-Georgia State

ASSISTANT EXECUTIVE DIRECTOR 1956-86

1956-57	Raymond W. Flodin	Alpha Omega-DePaul
1958-59	P. Alistair MacKinnon	Gamma Psi-Arizona
1961-64	Charles L. Farrar	Beta Psi-Louisiana Tech
1967-74	Ben H. Wolfenberger	Beta Upsilon-Texas Tech
1974-81	Michael J. Tillar	Alpha Theta-Cincinnati
1981-	Michael T. Walsh	Alpha Upsilon-Miami (Ohio)

DIRECTOR OF CHAPTER SERVICES 1981-86

1981-84	Mark A. Roberts	Gamma Omicron-San Francisco
1984-	C. Dean Ferguson	Kappa-Georgia State

CHAPTER CONSULTANT 1959-86

1959-61	Charles L. Farrar	Beta Psi-Louisiana Tech
1959-60	Donald J. Hill	Alpha Epsilon-Minnesota
1961-62	Connie M. McCoy	Delta Theta-Oklahoma City
1964-65	Gregory V. Gore	Beta Gamma-South Carolina
1964-65	James D. Flynn	Gamma Omicron-San Francisco
1965-66	Kenneth L. Vadovsky	Epsilon Omega-Eastern Illinois
1965-67	Ben H. Wolfenberger	Beta Upsilon-Texas Tech
1967-67	Donald H. Vickstrom	Zeta Kappa-Western State
1967-68	Frank J. Weber III	Epsilon Omega-Eastern Illinois
1968-69	Gerald W. Wells	Gamma Omega-Arizona State
1968-70	Ellery J. Lacy	Delta Eta-Lamar
1970-71	John B. McCoy	Zeta Upsilon-Virginia Tech
1971-72	Leonard L. Larsen	Beta Zeta-Louisiana State
1971-73	M. Lee Bell	Upsilon-Illinois
1972-74	John D. Richardson	Gamma Omega-Arizona State
1973-74	Michael J. Tillar	Alpha Theta-Cincinnati
1974-76	Terence R. Garrett	Theta Rho-Duquesne
1975-78	John A. Watton	Zeta Phi-Florida Atlantic
1975-77	Daniel J. Dufala	Theta Pi-Bowling Green
1977-78	Daniel W. LaFont	Eta Iota-Nicholls State
1978-80	Michael T. Walsh	Alpha Upsilon-Miami (Ohio)
1980-81	Mark A. Roberts	Gamma Omicron-San Francisco
1981-83	Jere W. White	Eta Theta-Angelo State
1982-85	John W. Belke II	Eta Rho-Wisconsin (LaCrosse)
1983-85	Richard M. Garber	Alpha Pi-Indiana (Bloomington)
1985-	Mitchell B. Simmons	Gamma Tau-Southern Mississippi
1986-	B. Todd Whisenant	Alpha Sigma-Alabama